



YMCA GLBT Resource Network

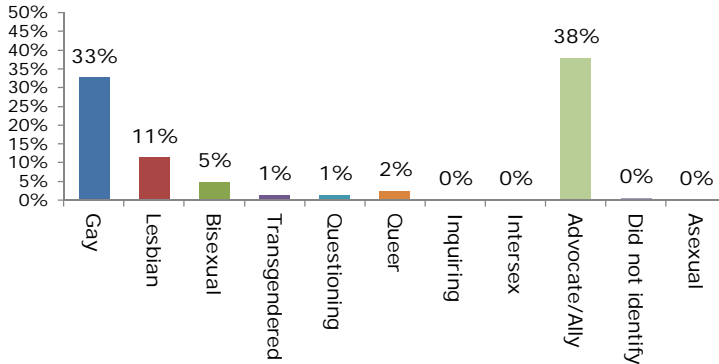
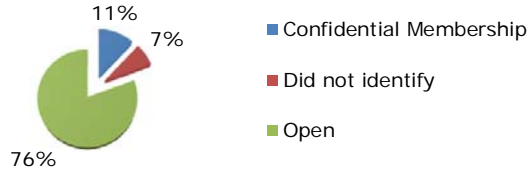
Membership Report

9/26/2011

Current Membership: 258

Confidentiality:

29 **Confidential Membership**
 18 **Did not identify**
 196 **Open**



Self Identify:

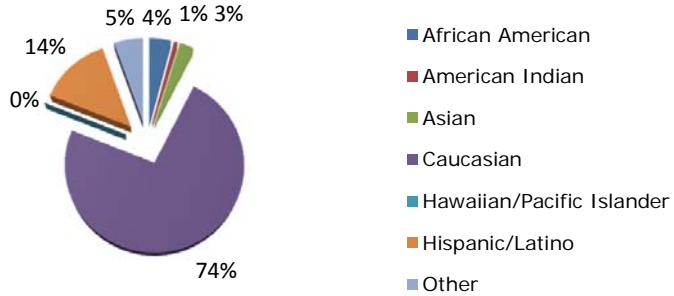
started reporting June 2010

84 **Gay**
 29 **Lesbian**
 12 **Bisexual**
 3 **Transgendered**
 3 **Questioning**
 6 **Queer**
 0 **Inquiring**
 0 **Intersex**
 98 **Advocate/Ally**
 1 **Did not identify**
 0 **Asexual**

Membership Ethnicity:

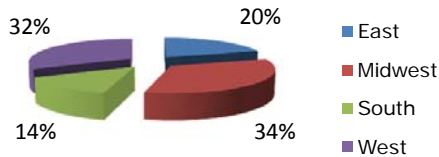
started reporting June 2010

6 **African American**
 1 **American Indian**
 4 **Asian**
 109 **Caucasian**
 0 **Hawaiian/Pacific Islander**
 20 **Hispanic/Latino**
 8 **Other**



Membership By Region:

started reporting June 2010

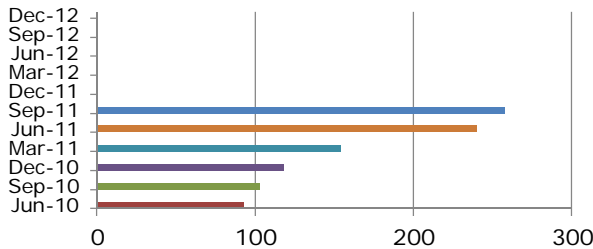


How did you hear about YMCA GLBT?

started reporting June 2010

Current Member	54	32%
P and P	3	2%
Internet Search	7	4%
Y Exchange	23	14%
Y Colleague	64	38%
Other	18	11%

Total Membership Count:



Number of Affirming YMCAs:

self reported

Total Number of Corporate Ys: 972

Welcoming	0	0%
Partner	0	0%
Advocate	0	0%
Affirming	0	0%

